

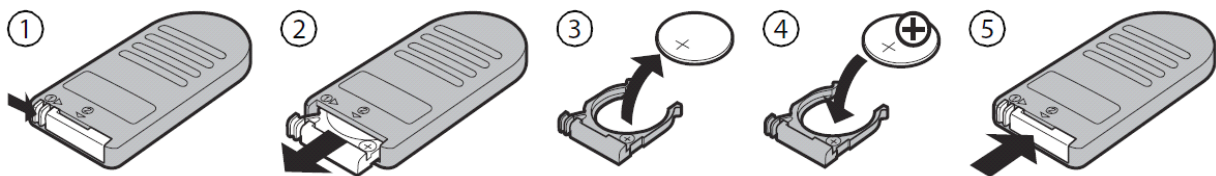
JJC RM-S2

Long range Infrared Remote Control Instruction
Design for FUJIFILM FINEPIX S2000HD



Thank you very much for purchasing a **JJC RM-S2** long range Infrared Remote Control. For the best performance, read these instructions carefully before use and keep them handy for your reference.

● To Replace the Battery



1. The remote control is powered by CR-2025 battery which is already included in.
2. Open the battery holder at the bottom of remote control.
3. Insert a fresh battery, please ensure the battery is put into a correct direction.
4. Replaces the battery holder.

● To use RM-S2 Remote Control to take photo

1. Mount the camera on a tripod (recommended) or place the camera on a stable, level surface.
2. Aim the transmitter on the remote control at the infrared receiver on the camera (usually within +/- 20 degree of the lens axis, from the left to the right and from the top to the bottom) and press the shutter-release button on the remote control (when using the remote outdoors, make sure that the subject is not backlit and that the line of site between the transmitter and the infrared receiver is not blocked by the lens or other obstacles).
3. How the camera focuses and shoots depends on the option selected for your camera's custom setting. For further information, check your camera's manual.
4. Infrared cannot be seen by human eyes. So you will see no visible light from the LED on the front end of the remote control when operating.

● To use RM-S2 Remote Control with TV

Connect your FUJIFILM FinePix S2000HD to a TV using the A/V cable to enjoy images that you have take in high definition. You can also use the wireless remote control to comfortably control the camera from a remote position.

Connecting the camera

1. Turn the camera's power OFF
2. Open the camera's terminal cover and connect the A/V cable into A/V OUT. Insert the other end of the cable into the TV A/V input.

* A/V cable is a supplied accessory of S2000HD camera.

Operating the Wireless Remote Control

1. Aim the transmitter on the wireless remote control at the receiver on the front of the camera.
2. Excluding the shutter button, the remote control's operational buttons perform the same actions as those on the FUJIFILM FinePix S2000HD.
3. There is no function for pressing the shutter button half-way down. An image is taken by pushing the shutter button down completely.

● Specification

- Battery Type: 1X CR-2025
- Operating temperature: 5 °C to 40 °C (40 °F to 105 °F).
- Operation distance: 1cm-15meters.
- Weight: 11 g
- Size: 56 X 34 X 6 mm
- RM-S2 replaces FUJIFILM RC-S2 wireless remote control.
- RM-S2 compatibles with FUJIFILM PINEPIX S2000HD.

